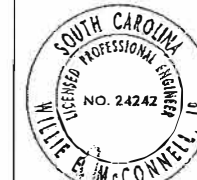


REFERENCES

WORK ZONE TRAFFIC CONTROL ENGINEER



Willie B. McConnell
SIGNATURE

2-4-2009
DATE

6			
5			
4			
3			
2			
1	5-6-08	JCS	TITLE BLOCK REVISION
0	9-14-07	JCS	DRAWING UPDATE
#	DATE	CHK	DESCRIPTION

SCDOT
DESIGN STANDARDS OFFICE
355 PARK STREET
ROOM 405
COLUMBIA, SC 29201

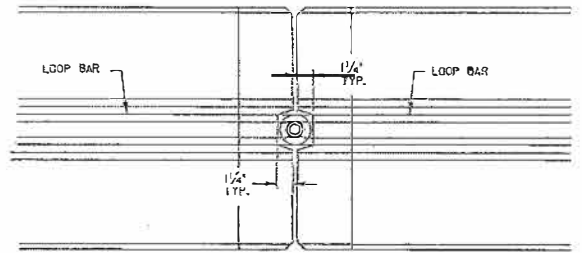
STANDARD DRAWING

TEMPORARY CONCRETE BARRIER SAFETY SHAPE PIN CONNECTION NORTH CAROLINA DESIGN

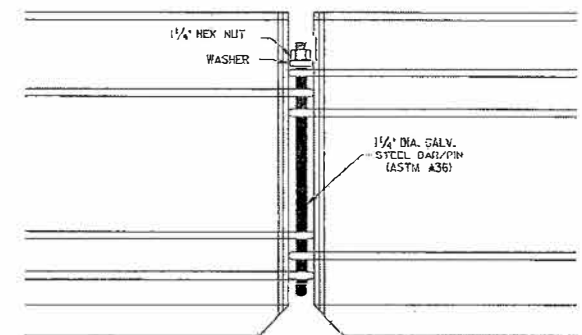
605-210-01
EFFECTIVE DTTG DATE: MAY 2009

NOTES:

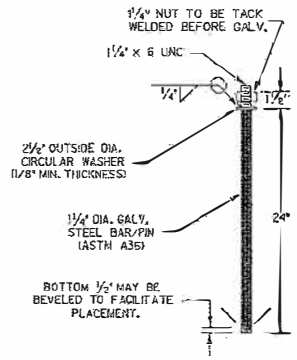
1. THIS TEMPORARY CONCRETE BARRIER WALL MEETS MCHRP REPORT 350.
2. THE DRAINAGE/LIFT SLOT DETAILS ILLUSTRATED ON THIS DRAWING ONLY APPLY TO BARRIER WALLS WITHOUT ANCHOR SLOTS. SEE SUBSEQUENT DRAWINGS FOR THIS BARRIER WALL DESIGN FOR THE DRAINAGE/LIFT SLOT DETAILS FOR THOSE BARRIER WALLS WITH ANCHOR SLOTS.
3. TEMPORARY CONCRETE BARRIERS WITH DRAINAGE/LIFT SLOTS, AS ILLUSTRATED ON THIS DRAWING, ARE INTENDED FOR USE IN AREAS WHERE ROADWAY SURFACE WATER RUNOFF MAY CAUSE EXCESSIVE WATER ACCUMULATION ADJACENT TO THE BARRIER WALL AS DETERMINED BY THE ENGINEER. INSTALL THE BARRIER AS REQUIRED BY THE STANDARD SPECIFICATIONS, THE STANDARD DRAWINGS, THE PLANS, AND THE ENGINEER.
4. ALL APPROVED TEMPORARY CONCRETE BARRIERS SHALL HAVE THE SCDOT APPROVAL STAMP EMBEDDED ON TOP OF THE BARRIER. THE APPROVAL STAMP, "SCDOT 350 XX 00 00", SHALL BE EMBEDDED 12 INCHES FROM EITHER END OF THE BARRIER WALL.



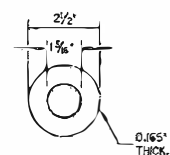
PLAN OF CONNECTION



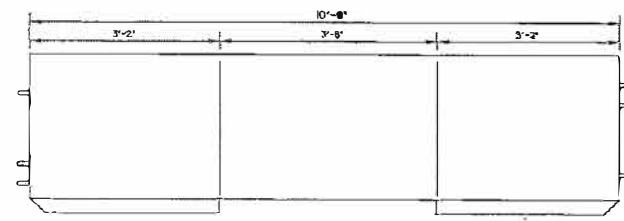
ELEVATION OF CONNECTION



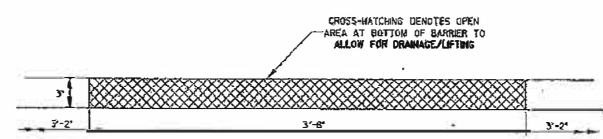
CONNECTOR PIN ASSEMBLY



PLAIN GALVANIZED STEEL WASHER FOR 1 1/4" PIN



DRAINAGE / LIFT SLOT LOCATION (BARRIER WALL WITHOUT ANCHOR SLOTS)



DRAINAGE / LIFT SLOT ELEVATION DETAIL (BARRIER WALL WITHOUT ANCHOR SLOTS)

THIS DRAWING IS NOT TO SCALE

REFERENCES

WORK ZONE TRAFFIC CONTROL ENGINEER



W. McConnell
SIGNATURE

2.4.2009
DATE

6			
5			
4			
3			
2			
1	9-5-08	JCS	TITLE BLOCK REVISION
0	9-5-07	JCS	DRAWING NO. UPDATE
#	DATE	CHK	DESCRIPTION



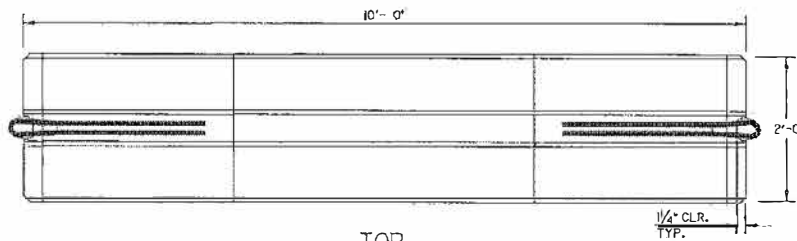
DESIGN STANDARDS OFFICE
955 PARK STREET
ROOM 405
COLUMBIA, SC 29201

STANDARD DRAWING

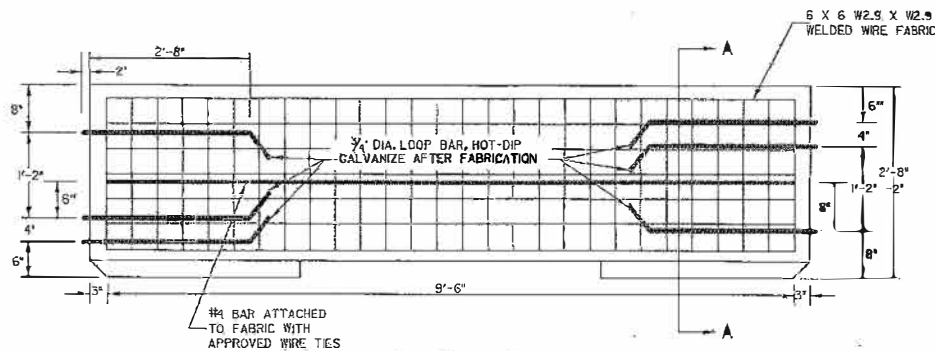
TEMPORARY CONCRETE BARRIER SAFETY SHAPE REINFORCEMENT NORTH CAROLINA DESIGN

605-210-02

EFFECTIVE LETTER DATE MAY 2009 THIS DRAWING IS NOT TO SCALE



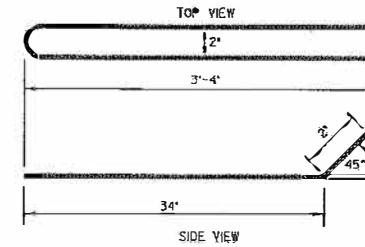
TOP VIEW



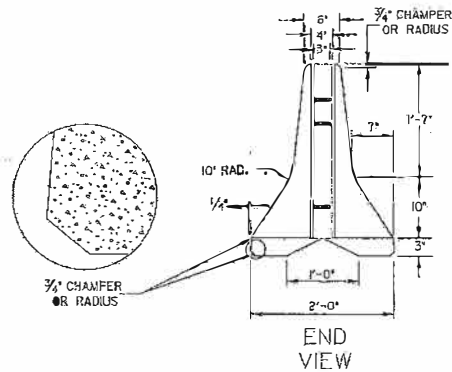
ELEVATION

NOTES:

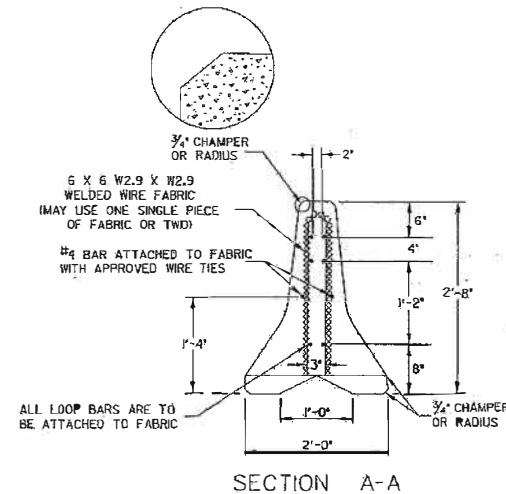
1. THIS TEMPORARY CONCRETE BARRIER WALL MEETS NCHRP REPORT 350.
2. REINFORCEMENT DETAILS ILLUSTRATED ON THIS DRAWING APPLY TO SAFETY SHAPE "NORTH CAROLINA DESIGN" TEMPORARY CONCRETE BARRIER WALL WITH AND WITHOUT ANCHOR SLOTS.
3. ALL APPROVED TEMPORARY CONCRETE BARRIERS SHALL HAVE THE SCDOT APPROVAL STAMP EMBEDDED ON TOP OF THE BARRIER. THE APPROVAL STAMP, "SCDOT 350 XX 00 00", SHALL BE EMBEDDED 12 INCHES FROM EITHER END OF THE WALL.



LOOP BAR BENDING DETAIL
3/4" DIAMETER (A36M)



END VIEW



SECTION A-A